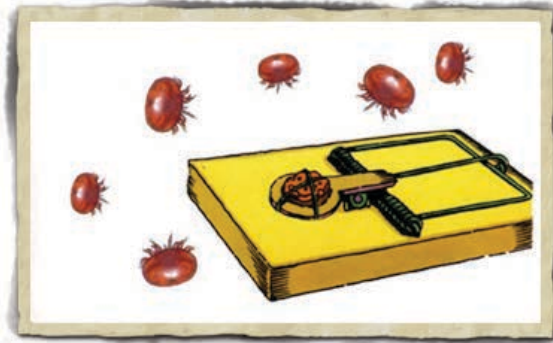


---

# How to tackle varroa

## TRAP THAT VARROA

The idea is to place a super comb fitted with worker foundation, into the brood box, early in the year - say early April. Place it as near to the centre of the brood nest as possible but without splitting the brood nest.



After about sixteen days, in a reasonably strong hive, the bees should have built a wild comb on to the bottom of the super comb. It will be drone comb and just about capped over by this time. As the varroa mother enters the drone cells just before they are capped to lay her eggs, we should have quite a lot of varroa mites in this wild comb.

The wild comb can now be swept of bees (Watch out for the queen), then cut off and destroyed,

complete with all those nasty mites.

The comb is put back into it's position in the brood nest to start the process all over again.

It is not important just when the wild comb is cut off. The mother mites enter the cells just before they are capped and cannot emerge until the drones start to emerge some fourteen days after the cells are capped.

It doesn't add to the normal hive work, and should fit into the regular inspections. The super comb itself will be producing workers, and there will be plenty of work for the wax producers.